

Getting Started

The Lyric Gateway combines a security system and home automation with flexibility to operate your system directly from the Gateway's Touchpad, or from a mobile (smart) device (smart phone, tablet, PC, etc.) using either the **MyHome Gateway™ App** or **Total Connect™ App**.

Arming Status LEDs show current system arming state

Arming options

Numbers light for user code entry

Alert Press when lit to hear Alert condition details

Emergency Type options

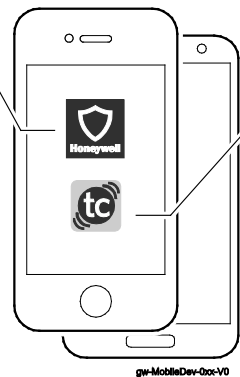
System Status Shield
 Green = Ready to Arm
 Red On = System is Armed
 Red Slow Blink = Entry delay countdown started
 Red Fast Blink = System is in Alarm
 White = Waiting for user code entry

Cancel (press while blinking to cancel an Emergency)

Emergency Press to activate Emergency options

MyHome Gateway™ App
 Gateway and device must be on the same Wi-Fi network

This free App allows you to operate your Security, Video and Automation Functions; Change system settings; add mobile devices and Z-Wave® components



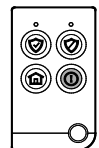
Total Connect™ Remote Services App
 Can use from anywhere

This free App allows you remote access to operate your Security, Video and Automation Functions

Download and install the Apps from your mobile device's App Store.

Other Options to Operate Your Gateway Security Features:

Wireless Keys (Key Fobs)



SiXFOB

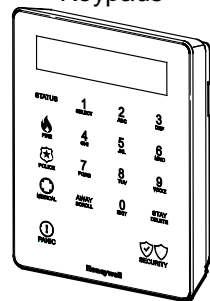


5834-4

IMPORTANT SECURITY NOTICE

If using wireless keys: your key fob is similar to your keys or access card. If lost or stolen, another person can compromise your security system. Immediately notify your Dealer/Installer of a lost or stolen key fob. The Dealer/Installer will then remove the key fob programming from the security system.

Wireless Keypads



LKP500

Arming Options

To...	Press...	The system...
Arm your system	ARMED Away and enter your user code	Arms in Away mode, for when no one will be home.
	ARMED Home and enter your user code	Arms in Home mode, for when someone will be home.
Quick Arm your system	ARMED Away or Home for 3 seconds	Quick Arms your system without a user code (if programmed to do so)
Disarm your system	Disarmed and enter your user code	Disarms

Switching Arming Modes:

When the system is armed or while arming or disarming, you can press any arming option and enter your user code to quickly switch between arming modes. This feature is available only from the Touchpad or a wireless key.

Auto-Home Mode: If your system is programmed to do so, it will automatically arm in Home mode if you select Armed Away but no one opens an exit-delay door.

Emergency Options

To...	Press...	The system...
Signal an Emergency	Emergency then select an Emergency Type or	If programmed to do so, notifies the monitoring company that a fire/police/medical emergency exists.

Canceling and Clearing Alarms / Emergencies

1	2	3	Enter your User Code The Alarm will silence and the system will announce the status.
4	5	6	
7	8	9	Check for alarm details on MyHome Gateway App or Total Connect Remote Services.
0	Cancel		Enter a User Code again to clear alarms.
			User Code

IMPORTANT!

If the Lyric Gateway is beeping rapidly when you enter the premises, an alarm has occurred during your absence and an intruder may still be on the premises.

LEAVE IMMEDIATELY and CONTACT THE POLICE from a nearby safe location.

System Sounds

When you hear...	It means...
Beeping	Touchpad options are being pressed, entry/exit countdowns have begun, and other functions*
Announcements or Chime	A system condition exists, or a zone has been faulted. (Voice announcements, chimes and most sounds are adjustable through the MyHome Gateway™ App)
Sounders or Sirens blaring (internal and/or external)	System is in Alarm. Alarm volume is not adjustable.

*NOTE: A beep every 45 seconds indicates one of your wireless devices has a low battery condition. Use **MyHome Gateway App** to see which device(s) need new batteries.

Gateway Menu Mode

The Gateway Menu Mode provides options to add and delete mobile (smart) devices from your system or change the system Wi-Fi network. When the System is disarmed and the number keys are off, enter the **Master Code** and

- 1 1** to hear a list of the available menu mode options
- 2 0** to delete all enrolled MyHome Gateway Apps. [Deleted devices will have to be re-enrolled for them to operate your Gateway.]
- 2 1** to enroll or re-enroll devices you want to use to operate your Gateway with the MyHome Gateway App.
- 3 1** to enter the Gateway in Access Point mode; used to change your Wi-Fi setup if your network connection/router changes.

To operate additional features of your Gateway: Use either the **MyHome Gateway™ App** for local control, or the **Total Connect™ App** to remotely operate your Gateway system from a mobile (smart) device.

Adding Mobile Devices to your Gateway

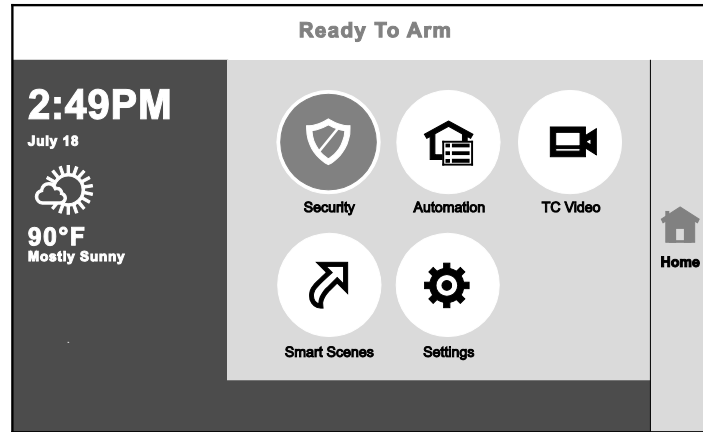
Up to 8 mobile devices can operate your Gateway system with the **MyHome Gateway App**. To add a device:

1. Download the Honeywell **MyHome Gateway App** to the mobile device(s) that will be used to control your system.
2. Ensure each mobile device is connected to the same Wi-Fi network the Gateway is on (check **Settings > Wi-Fi** on the device).
3. On the Gateway Touchpad, enter the **Master code** and **2 1** to ensure the Gateway is in enrollment mode.
4. Launch the **MyHome Gateway App** on a device. The App will display a six-digit enrollment number.
5. Enter that six-digit number on the Gateway Touchpad.
6. When prompted, enter a valid user code on the **MyHome Gateway App** screen. The screen will confirm the enrollment success and open the **MyHome Gateway App Home** screen.
7. Follow the prompts on screen and throughout the User Guide / User Reference Guide to operate your system with the **MyHome Gateway App**.

For full details of all user functions, please see the system's Quick User Guide and User Reference Guide located online at: <http://www.security.honeywell.com/hsc/products>. These manuals also available from your installer upon request.

Using the MyHome Gateway App

Start the **MyHome Gateway** App and refer to the following tables. Manage System Security, Automation, Smart Scenes, Video and Settings from the Home screen:



Option	Press...	Then...	Allows you to...
Security		See the next Table	Operate and manage the security features of your Gateway. See the next table.
Automation		---	Manually operate your Z-Wave devices
		✓ and	Add or delete Z-Wave Devices
Video		---	View and configure system cameras; manage video recovery functions
Smart Scenes		Master User Code	View and run automation scenes to operate your system for convenience, comfort, energy savings and security*.
Settings		---	Adjust the Gateway touchpad and LED brightness and the announcements and chime volume

*Once a Total Connect account is created, Smart Scenes are created and deleted using **Total Connect Remote Services**.

Recommended for Android Mobile Device Users: Disable Power Saving mode on your device. Failure to do so may cause the app to lose connection to the Gateway if the mobile device enters power save mode.

© 2016 Honeywell International Inc. Honeywell is a registered trademark of Honeywell International Inc. All other trademarks are the properties of their respective owners. All rights reserved.

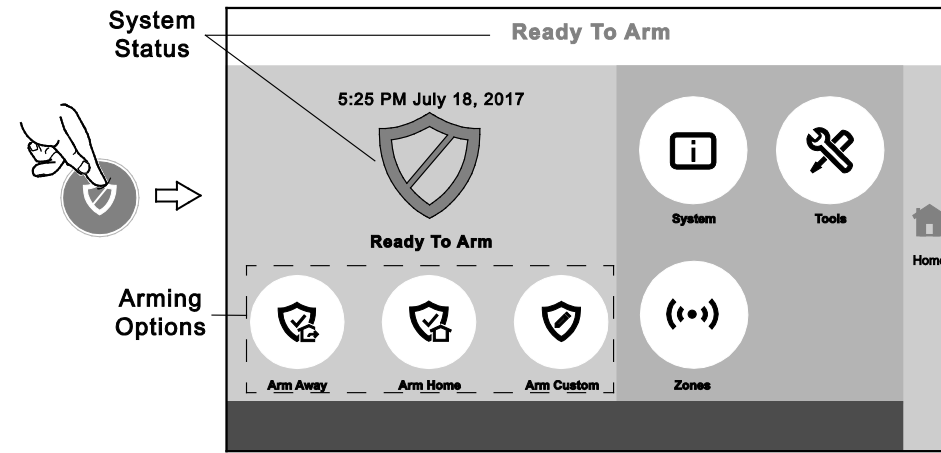
Ref: LCP300-L/LCP300-LC

800-22261 10/16 Rev B Part 1

Honeywell

2 Corporate Center Drive, Suite 100
P.O. Box 9040, Melville, NY 11747
Copyright © 2016 Honeywell International Inc.
www.honeywell.com/security

Security Options

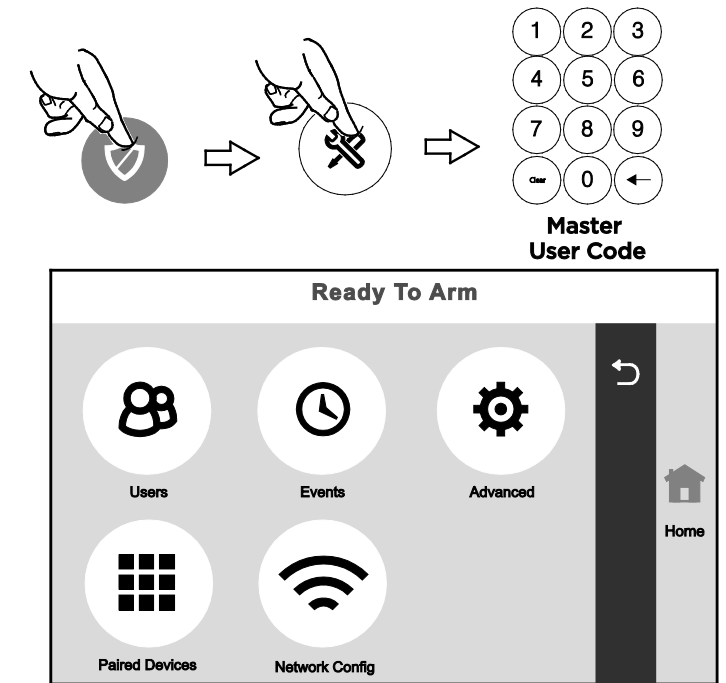


To...	Press...	Then...	The system...
Arm your system		(Away) + user code	Arms in Away mode
		(Home) + user code	Arms in Home mode
		(Custom) select the zones to bypass + user code	Custom Arming selections: Arm with selected zone bypassed (and unprotected), also choose to arm with Entry Delay or Instant ¹ , and Silent Exit ²
Disarm system & silence alarms		(Disarm) + enter user code	Disarms and silences sounds
Manage Zones		Select zones to bypass or clear bypass for zones. When prompted, enter a valid user code	
Check System		---	Displays a list of system trouble conditions (e.g., low battery or cover tamper)
Signal an Emergency		Use the Gateway Touchpad Emergency options or, if programmed to do so, use your wireless key (key fob)	

¹ In Arm Custom mode, deselect Entry Delay to choose Arm Instant. In this mode, an alarm will sound immediately if an entry/exit door is opened.

² Silent Exit means no beeps will sound during the Exit Delay when arming the system.

System Settings



Option...	Press...	Allows you to...	
Manage User Codes		Master, Edit Guest, Edit Duress, Edit	Edit or delete a code for the respective user type.
		Add New	Assign a user name and code for other system users.
Press Save when done.			
Check Events		View system event logs.	
Manage Advanced Settings		Access software upgrades, perform tests and other user maintenance functions.	
Check Paired Devices		View a list of mobile devices paired to your Gateway	
Configure your system network		Configure Wi-Fi connection to the Gateway	

NOTE: The **MyHome Gateway** App requires connection to the Gateway via the premise's Wi-Fi router (Ethernet cable or Wi-Fi). The **Total Connect** App requires internet or cellular connection for remote access to the Gateway.